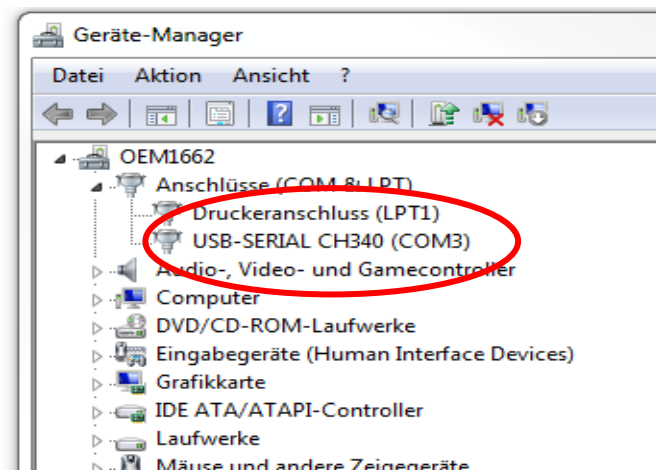


## IMPORTANT!

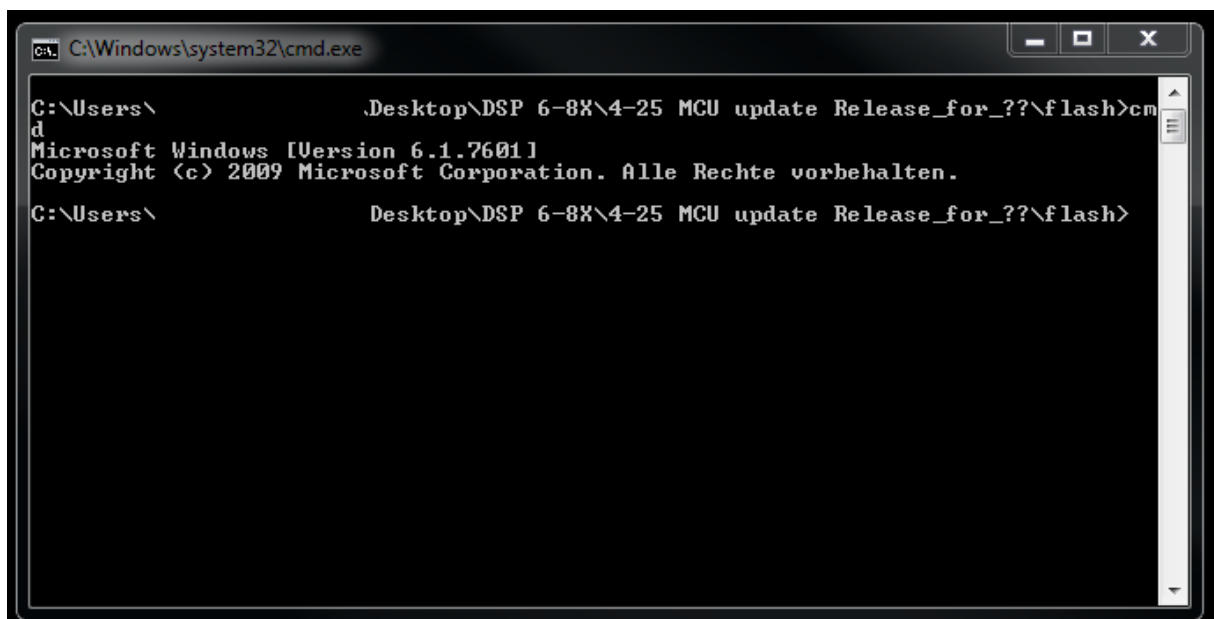
The GUI software must be closed before starting the flash update!

### Flash update instruction

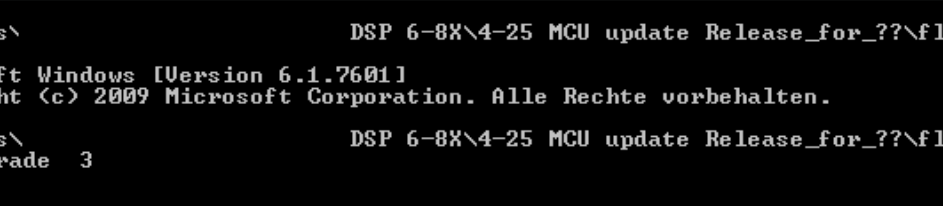
1. Connect the DSP 6-8X to a power source (+/- 12 Volt and remote wire)
2. Connect the DSP 6-8X to your Windows PC with the included USB-cable
3. Check the COM port of the unit (USB-SERIAL CH340) with the device manager, e.g. COM port "3"



4. Start the update by operating "MYCMD" (from Flash update file).The command window will open



Attention: Enter two (2!) space tabs between the command and the COM port number!



The screenshot shows a Windows Command Prompt window with the title bar "C:\Windows\system32\cmd.exe". The command prompt displays the following text:

```
C:\Users\  
d  
Microsoft Windows [Version 6.1.7601]  
Copyright (c) 2009 Microsoft Corporation. Alle Rechte vorbehalten.  
C:\Users\  
ash_Upgrade 3
```

The command prompt is running a command to update the MCU, which is partially visible as "DSP 6-8X\4-25 MCU update Release\_for\_??\flash>cm". The command prompt is also showing the path "C:\Users\  
ash\_Upgrade 3".

6. Confirm the command with the "ENTER" button.

```
C:\Windows\system32\cmd.exe
```

```
C:\Users\XXXXXXXXXX\Desktop\DSP 6-8X\4-25 MCU update Release_for_??\flash>cmd  
Microsoft Windows [Version 6.1.7601]  
Copyright (c) 2009 Microsoft Corporation. Alle Rechte vorbehalten.  
  
C:\Users\XXXXXXXXXX\Desktop\DSP 6-8X\4-25 MCU update Release_for_??\flash>Flash Upgrade 3  
  
C:\Users\XXXXXXXXXX\Desktop\DSP 6-8X\4-25 MCU update Release_for_??\flash>MySer.exe flash_image.bin 3  
Beginn erase flash chip  
erase flash chip complete!  
Beginn program flash chip  
+++++  
+++++  
+++++  
+++++  
+++++  
+++++  
+++++  
+++++  
program sucessfull!  
  
C:\Users\XXXXXXXXXX\Desktop\DSP 6-8X\4-25 MCU update Release_for_??\flash>
```

The unit will be updated now. Close the window after the program has been finished successfully.